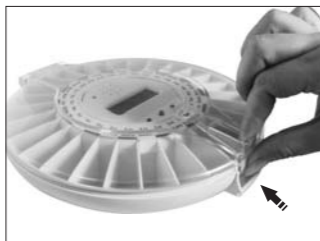


1. Insert the batteries 2. How to open



Insert the batteries (4 - AA) into the battery compartment correctly.



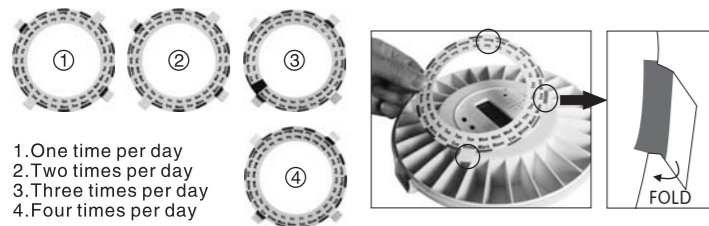
Press gently with thumb on front tab of Automatic Pill Dispenser as shown.

3. How to clean the tray



Clean only with damp cloth or sponge.

4. Loading the Automatic Pill Dispenser



1. One time per day
2. Two times per day
3. Three times per day
4. Four times per day



The Automatic Pill Dispenser is supplied with 4 discs. The discs identify the day of the week, and the appropriate number of doses per day (1, 2, 3, or 4 doses per day).

The appropriate disc for the medication regime is then placed on the tray; fold tabs down to secure in pill compartment, prior to filling it, and used as a guide as to where to place the pills.

Organizing the medication, assigning dose times and determining what medications go into each slot is the responsibility of you, your caregiver, and/or your health care provider.

The refill frequency will depend upon the number of daily medications for example:

- One time a day medication refill every 28 days
- Twice a day medication refill every 14 days
- Three times a day medication refill every 9 days
- Four times a day medication refill every 7 days

5. 12/24-Hour Time Formats

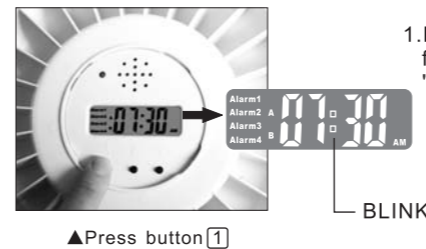


▲ Press button 2 and button 3 simultaneously

The automatic pill dispenser automatically defaults to a 24 hour time format. To switch to a 12 hour format, press buttons 2 and 3 simultaneously. The AM or PM symbol will appear on the right side of the display when the clock is in the 12 hour time format. Release the buttons when the desired time format is displayed.

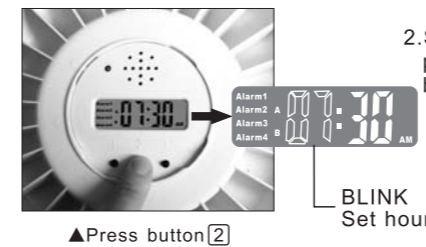
6. Setting the clock

(button 1- left; button 2- middle; button 3- right)



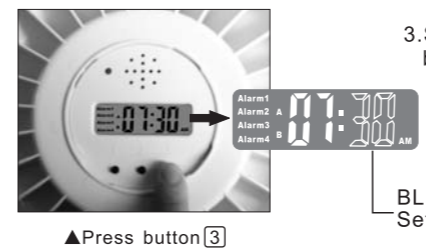
▲ Press button 1

1. Press and hold button 1 for a few seconds (until the symbol ":" blinks) and then release.



▲ Press button 2

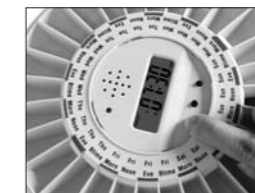
2. Set the correct time by pressing button 2 (hours) and button 3 (minutes).



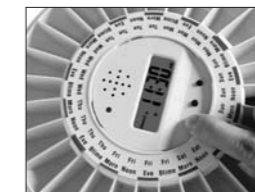
▲ Press button 3

3. Store clock time by pressing button 1.

7. Setting and Checking the Alarm Times



1. Press button 1 and then release. The alarm 1 symbol will begin to blink. To set alarm time 1, press buttons 2 (hours) and 3 (minutes). If you wish to cancel the alarm, press button 2 until is displayed, which occurs after 23:00 or 11:00 p.m.



2. After you have programmed the correct alarm time, press button 1 again to store the alarm time and to advance to the next Alarm setting.



3. The Alarm 2 symbol will blink. To set alarm time 2, use buttons 2 & 3.



4. Continue as above to set Alarm setting 3 and Alarm setting 4.

5. End by pressing button 1 until the Alarm symbols cease to blink.

■ If buttons 2 or 3 are depressed, time display progresses automatically. If you let the display continue to blink in the setting mode, it will automatically return to normal function after one minute.