

1 Install Battery, Adjust Settings

Remove the protective boot. Insert batteries as shown.

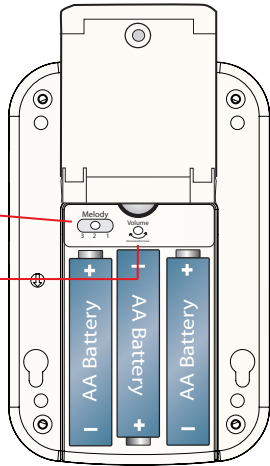
CordLess Monitor settings:
Volume, Melody

Alert Tone/Melody Adjustment
Default Setting: Melody 1

Alert Volume Dial
Default Setting: Full Volume

Close the battery door and secure it with the small Phillips-head screw.

Place the monitor in its protective plastic boot.



2 Program Sensor Pad(s)

The CordLess® Monitor can work in two modes:

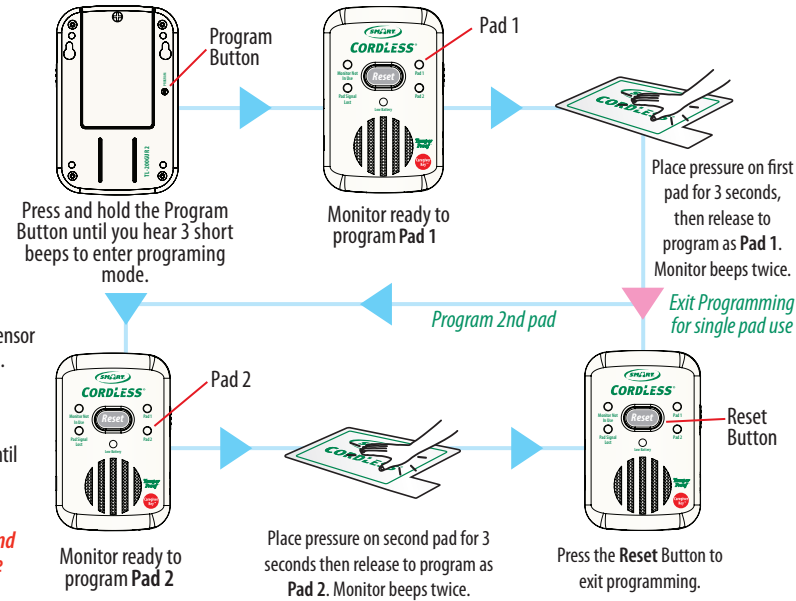
1. With one CordLess® bed or chair sensor pad
2. With two CordLess® bed sensor pads

(See separate instructions for CordLess® Floor Mat operation)

Place one or two CordLess bed or chair pads within reach. Each sensor pad comes with a CordLess Transmitter connected and turned on.

Press and hold the Program Button on the back of the monitor until you hear 3 short beeps to enter programming mode. Release the button.

***NOTE: When there are 2 pads programmed to the monitor and no one is on the pads, press the reset button twice to reset the monitor.**



3 Test the System for each Pad

Apply pressure to pad

Monitor will beep two times

Status light will blink while pressure remains on pad

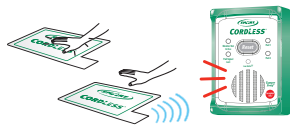
When pressure is removed, monitor will alarm

Press reset button to silence alarm or use caregiver key depending on your setting.

A. Test Pad 1



B. Test Pad 2



IMPORTANT: When using the TL-2100G CordLess® Monitor with two pads, place all the components (the two pads and the monitor) within 15 feet of each other. Test the system before each use.

Resetting the Monitor/Tamper Proof™ Mode with Caregiver Key™ (Optional)

Caregivers can choose to reset the CordLess Monitor in either of two ways:

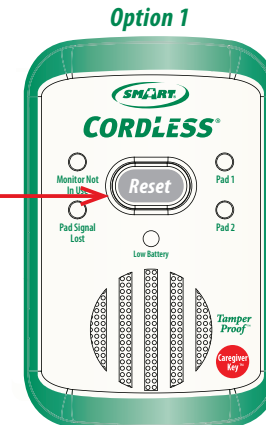
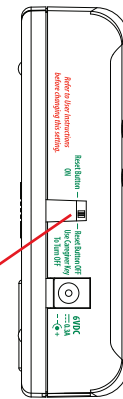
“Reset Switch ON”: Pressing the Reset/Low Battery button on the front of the monitor.

“Reset Switch OFF”: Placing the optional Caregiver Key over the red dot on the front of the monitor.

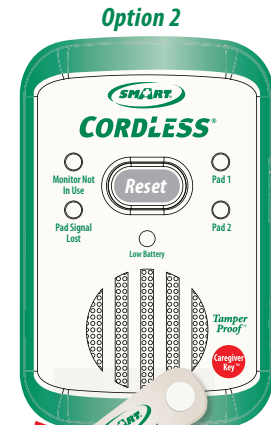
Option 2 allows only the caregiver to reset the monitor.

See switch on side of monitor to select the option of your choice.

For more information about the Caregiver Key™ and how it can be used in your facility's Fall Risk Assessment Program call 800-650-3637



OR



When using “Reset Button ON” Mode
Press the Reset/Low Battery button to reset the monitor.

When using “Reset Button OFF”
Place the Caregiver Key™ over the red dot to reset the monitor.



PATENTED TECHNOLOGY

SMART CAREGIVER CORPORATION



TamperProof™
With included Caregiver Key™
PATENTED TECHNOLOGY

- Works with two sensor pads simultaneously
- No Cords Between Monitor and Sensor Pads

CordLess®
Fall Monitor
TL-2100G

Installation and Use Instructions

CordLess® Fall/Mobility Monitor TL-2100G

CAUTION: If using this monitor with Change Pad Indicator™ Timed Sensor Pads, this monitor will not indicate when pad life has expired. Pads will still function normally. Call (800) 650-3637 for more information.

WARNING: Failure to comply with warning may result in injury or death. This device is not suitable for all individuals. Other devices may be required. This device is not a substitute for visual monitoring by caregiver. The manufacturer does not claim that this device will stop elopement and/or stop falls. This device is designed to augment caregivers' comprehensive resident mobility management program. **Test this device before each use. Read the instructions and Legal Disclaimer.**

The Smart Caregiver Corporation TL-2100G CordLess® Monitor is designed to be installed by the end user. As such, it is the entire responsibility of the buyer to insure that the system is properly installed and tested. Further, the system is not designed to replace good caregiving practices including, but not limited to:

- Direct patient supervision
- Adequate training for staff personnel for fall prevention and elopement
- Testing of the system before each use

WHERE PERMISSIBLE, IT IS THE SELLER'S INTENT TO LIMIT ANY LIABILITY FOR SPECIAL, CONSEQUENTIAL OR INCIDENTAL ECONOMIC DAMAGES TO REFUND OF THE PURCHASE PRICE OR REPLACEMENT OF THE GOODS. SELLER DISCLAIMS ANY LIABILITY FOR COMPENSATORY OR OTHER DAMAGES ARISING OUT OF THE USE OF THE GOODS.

WARNING: The manufacturer does not claim that this device will stop elopement and/or stop falls. This device is designed to augment caregivers' comprehensive resident mobility management program. This product is to be used by a licensed caregiver only.

Limited Warranty: Seller warrants that the goods sold will be free from defects of workmanship and manufacturing, for a period of one year from the date of sale. Other than this limited warranty, seller makes no express or implied warranties. Except for this limited warranty, NO EXPRESS OR IMPLIED WARRANTIES ARE GIVEN AND NO AFFIRMATION OF SELLER, BY WORDS OR ACTION, WILL CONSTITUTE A WARRANTY. THE GOODS BEING PURCHASED ARE BEING SOLD ON A "WITH ALL FAULTS" BASIS. THE ENTIRE RISK AS TO THE QUALITY AND PERFORMANCE OF THE GOODS IS WITH THE BUYER. SHOULD THE GOODS PROVE DEFECTIVE FOLLOWING THEIR PURCHASE, THE BUYER, AND NOT THE MANUFACTURER, DISTRIBUTOR OR RETAILER, ASSUMES THE ENTIRE COST OF ALL NECESSARY INSTALLATION, SERVICING OR REPAIRS.



SMART CAREGIVER CORPORATION
1229 North McDowell Blvd., Petaluma, CA. 94954 | Tel: 800-650-3637
sales@smartcaregivercorp.com | www.smartcaregivercorp.com

2012-13

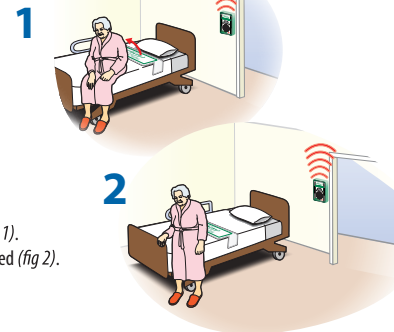
CordLess® Bed Sensor Pads

TEST THE SYSTEM

- Apply pressure to the pad to activate system. The Monitor will beep twice when activated. The Pad 1 or Pad 2 light on the front of monitor will blink as long as there is pressure on Pad 1 or Pad 2, respectively.
- The alert will sound whenever pressure is released from pad. Press the "Reset" button on front of monitor or use the Caregiver Key, depending on your reset setting to silence the alert.
- If the Pad Lost light is on and system does not test properly, reduce the distance between the monitor and the pad. Retest.

BED PAD PLACEMENT

- Place the pad under shoulders to be alerted when the resident sits up in bed (fig 1).
- Place pad under the hips/buttocks to be alerted when the resident vacates the bed (fig 2).



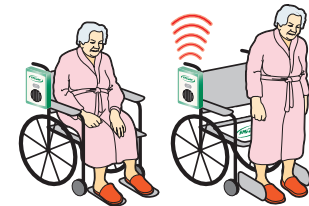
CordLess® Chair Sensor Pads

TEST THE SYSTEM

- Apply pressure to the pad to activate system. The Monitor will beep twice when activated. The Pad 1 or Pad 2 light on the front of monitor will blink as long as there is pressure on Pad 1 or Pad 2, respectively.
- The alert will sound when pressure is released from pad. Press the "Reset" button on front of the monitor or use the Caregiver Key, depending on your reset setting to silence the alert.
- If the Pad Lost light is on and system does not test properly, reduce distance between the monitor and the pad. Retest.

WHEELCHAIR/CHAIR PAD PLACEMENT

- Center pad on the chair seat under buttocks.



CordLess® Floor Mats

TEST THE SYSTEM

- Step on the Floor Mat to set off the alert.
- Press the "Reset" button on the front of the monitor or use the Caregiver Key, depending on your reset setting to silence the alert.

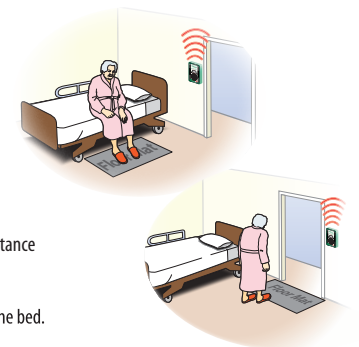
IMPORTANT: There must be a 15 second period with no pressure on the floor mat for the TL-2100G to fully reset.

NOTE: The Status lights do not function when using floor mats.

- If the "Pad Lost" light is on and the system does not test properly, reduce the distance between the monitor and the floor mat. Retest.

FLOOR MAT PLACEMENT

- Place the floor mat in the desired location such as a critical doorway or next to the bed.



Caution: TL-2100G and corded sensor pads/floor mats

Corded sensor pads and/or floor mats will override and disable wireless communication with all programmed CordLess® pads when plugged into the TL-2100G fall monitor. To reestablish wireless operation, unplug the corded device and test the Cordless device(s) as described above.

IMPORTANT INFORMATION:

Smart CordLess® products utilize wireless technology which is subject to physical and environmental considerations. **These products must be tested by the end user before each use in the setting in which they are to be used.** Please be aware that the transmitter will not be 100% accurate if it is out of range at any time. **The transmitter is battery operated and the life of the battery will vary based on usage.** Wireless systems and monitors are intended as an addition to good caregiving practices and are not a substitute for proper staffing and patient management practices including, but not limited to, direct visual supervision of all residents by caregiver(s). We recommend that all personnel receive periodic training in the operation of these systems and that the systems are tested before each use.

Need Set-up Help? (800) 650-3637